

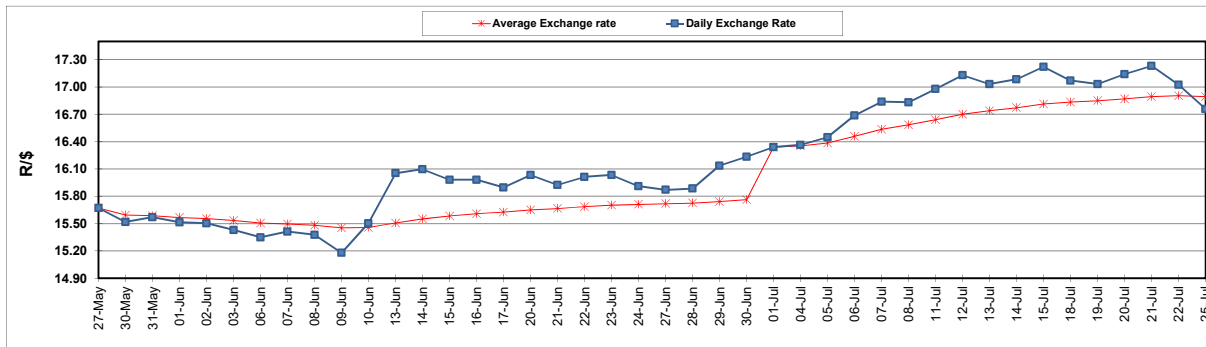
	PETROL 95 ULP	PETROL 93 ULP & LRP	DIESEL 0.05%	DIESEL 0.005%	ILL. PAR.
GAUTENG PUMP PRICE (SA c/l) AS FROM 06/07/2022	2,674.000	2,631.000	-	-	-
WHOLESALE PRICE (SA c/l) AS FROM 06/07/2022	-	-	2,540.440	2,552.840	1,986.288
SINGLE NATIONAL MAXIMUM RETAIL PRICE	-	-	-	-	2,623.000
BASIC FUEL PRICE - 25/07/2022 (SA c/l)	1,315.178	1,296.270	1,442.038	1,451.068	1,494.698
PRESS RELEASE CONTRIBUTION TO BFP 06/07/2022 - 25/07/2022 (SA c/l)	1,689.410	1,646.410	1,763.630	1,776.030	1,768.128
UNIT OVER/(UNDER) RECOVERY - 01/07/2022 (SA c/l)	374.232	350.140	321.592	324.962	273.430
AVERAGE BASIC FUEL PRICE 01/07/2022 - 25/07/2022	1,468.155	1,430.222	1,586.614	1,596.056	1,604.022
AVERAGE UNIT OVER/(UNDER) RECOVERY 01/07/2022 - 25/07/2022	189.137	187.600	149.487	152.621	134.812

ANALYSIS MOVEMENT OF AVERAGE OVER/(UNDER) RECOVERY

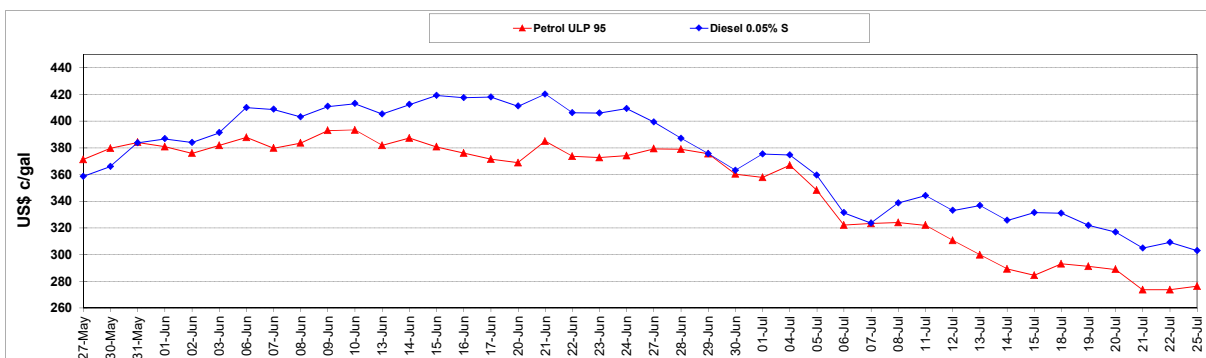
	PETROL 95	PETROL 93	DIESEL 0.05%	DIESEL 0.005%	ILL. PAR.
- MOVEMENT IN INTERNATIONAL PRODUCT PRICES	287.421	283.344	255.701	259.467	242.191
- MOVEMENT IN EXCHANGE RATE	(98.284)	(95.744)	(106.214)	(106.846)	(107.379)
AVERAGE UNIT OVER/(UNDER) RECOVERY 01/07/2022 - 25/07/2022	189.137	187.600	149.487	152.621	134.812

R/\$ EXCHANGE RATE - (R/\$16.7555 - 25/07/2022)

EXCHANGE RATE USED IN BASIC FUEL PRICE



INTERNATIONAL PRODUCT PRICES OF BASKET USED IN BASIC FUEL PRICE



BASIC FUEL PRICE IN SA CENTS PER LITRE

